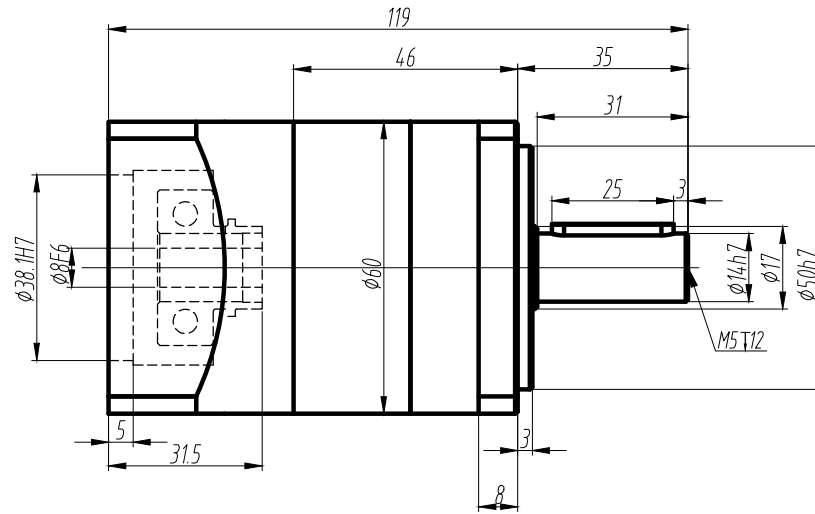
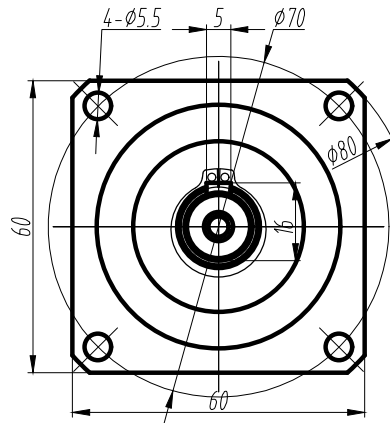
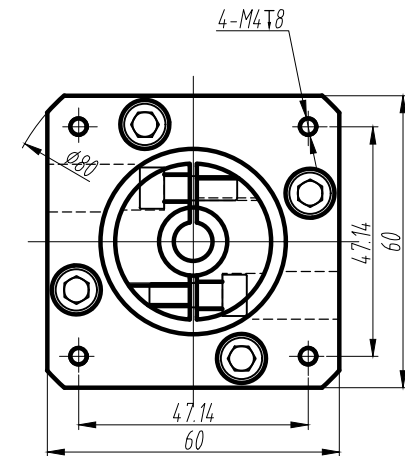


Unit: mm

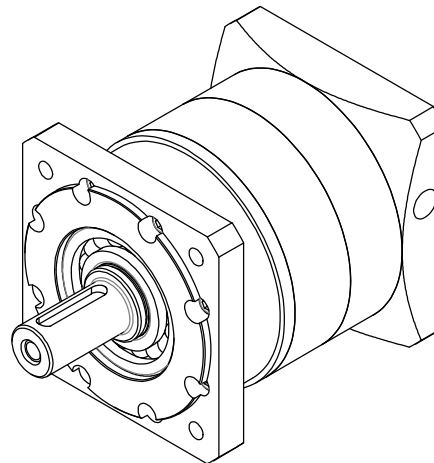
**Output**



**Input**



Ratio	<b>5:1</b>
Nominal output torque (Nm)	<b>29.5</b>
Emergency stop torque (Nm)	<b>59</b>
Rated input speed (rpm)	<b>3000</b>
Max. input speed (rpm)	<b>6000</b>
Max. output radial load (N)	<b>485</b>
Max. output axial load (N)	<b>380</b>
Moment of inertia (Kg cm <sup>2</sup> )	<b>0.092</b>
Full load efficiency (%)	<b>96</b>
Noise (dB)	<b>60</b>
Backlash (acr min)	<b>≤12</b>
Input shaft diameter (mm)	<b>Φ8</b>
Output shaft diameter (mm)	<b>Φ14</b>
Operating temperature (°C)	<b>-25°~ +90°</b>
Average lifetime (h)	<b>20000</b>
Protection level	<b>IP65</b>
Weight (Kg)	<b>1.0</b>
Others	<b>...</b>



Motor input shaft diameter

Diameter	Select (√)
φ19	
φ16	
φ14	
φ8	

Leadshine Technology Co.,Ltd

**PLF060-5-P2-BJ-8-38.1**

Planetary Gearbox  
Frame size 60mm, Ratio 5:1

[www.leadshine.com](http://www.leadshine.com)